

Dinc Erem Tapa

An expert in multimedia design Dinc Erem Tapa has received extensive education in graphic design, visual communications and the arts from Bilgi University / Istanbul.

Having worked at various marketing agencies in Turkey, including a two year position as the creative director of MSN Turkey.

Erem Tapa is fluent in English, French and Turkish and plays the trompet, zither, guitar and percussions.

The son of famous cartoonist Ibrahim Tapa, he is a web guru with graphic abilities that range from animation to film production.

He has done his military service in 2007. He has been an adjunct in istanbul Bilgi University toured Turkey as an instructor for video workshops.

Aliases:

Kaiff
Badbwai
Abi

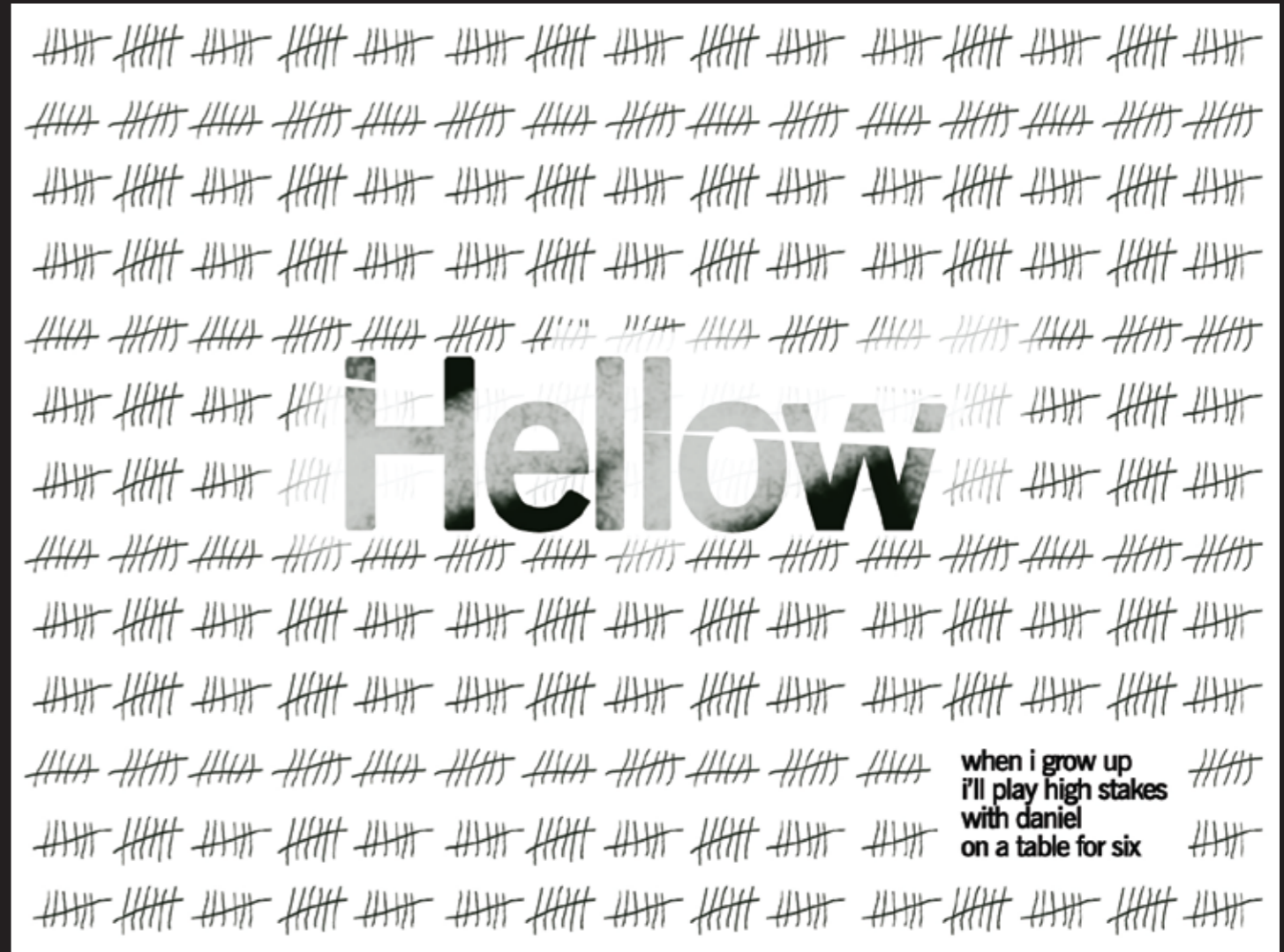


Dinç Erem Tapa

Artworks Portfolio
1999 - 2013

Hellow

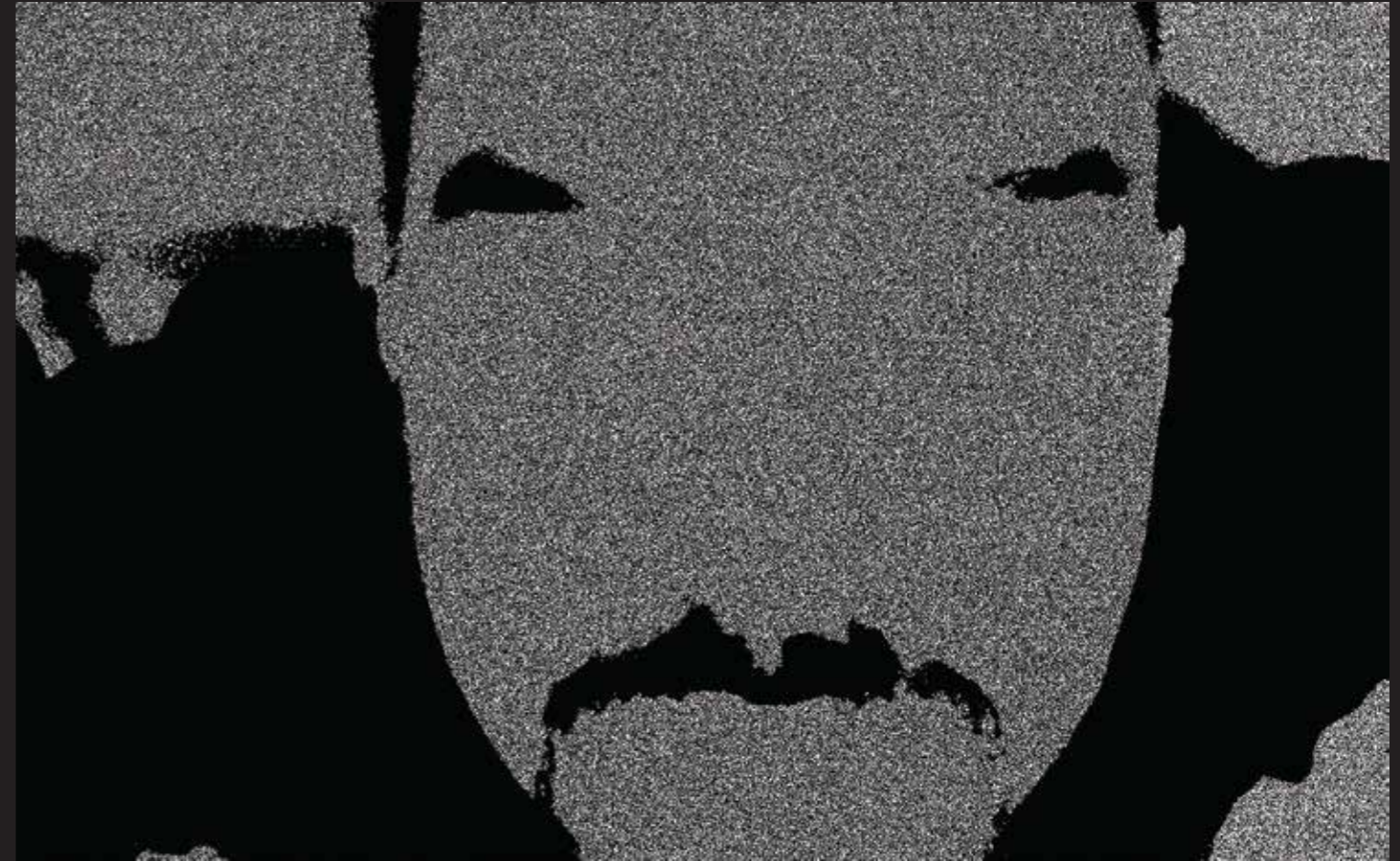
Digital Work - Poem
2009



Self Portrait

Photograph

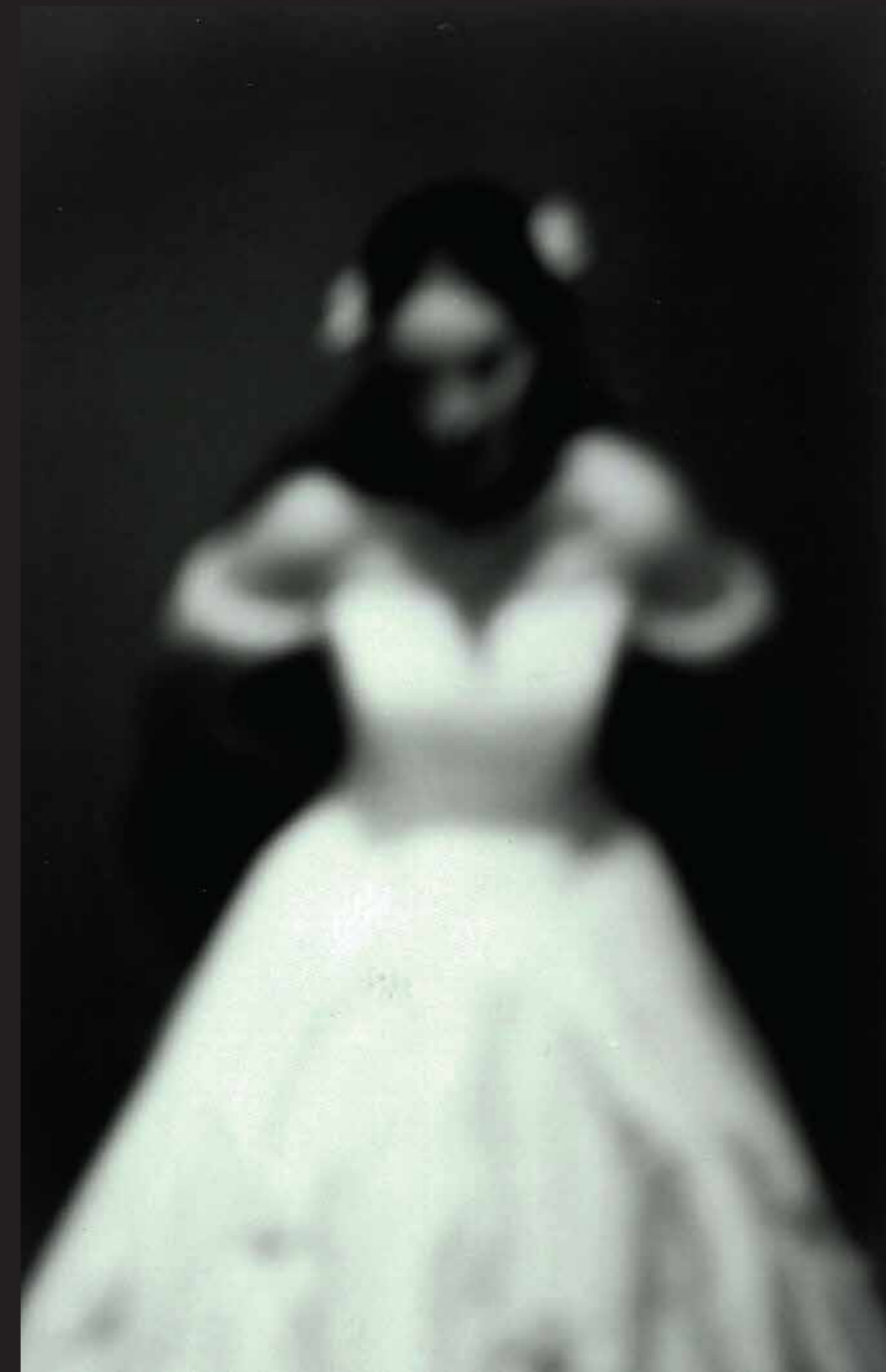
~



Exposed
Photograph
2006



Bride
Photograph
2003



Bride
Photograph
2003



Priapos

Portfolio Casing - Statue
2010



Restart

Photograph
2009



The Moon

Photograph
2010



King Seroman

Photograph
2010



Bond

Video
2002



More Bread

Photograph
2010



Self Inflicted Wounds

Video
2009

When the rom is all over...
There's only nature to heal you...

- I got in a knife fight in Mexico...
- I jumped a barbed wire fence to save a pony/calf/puppy/kitten from a wolf.
- I forgot how to shave correctly.
- My cat hates me.
- I'll never wrestle a crocodile again...

These are lies to cover the reason of a self inflicted wound. You have to lie for the rest of yourlife if you don't do something about that...

In the socially challenged world out there, people do not trust nor befriend somebody with one of those...

For the inflictor though...

Other than that this is common on Military personnel and explained here as follows: Most self-inflicted wounds occur during wartime, for various possible reasons.

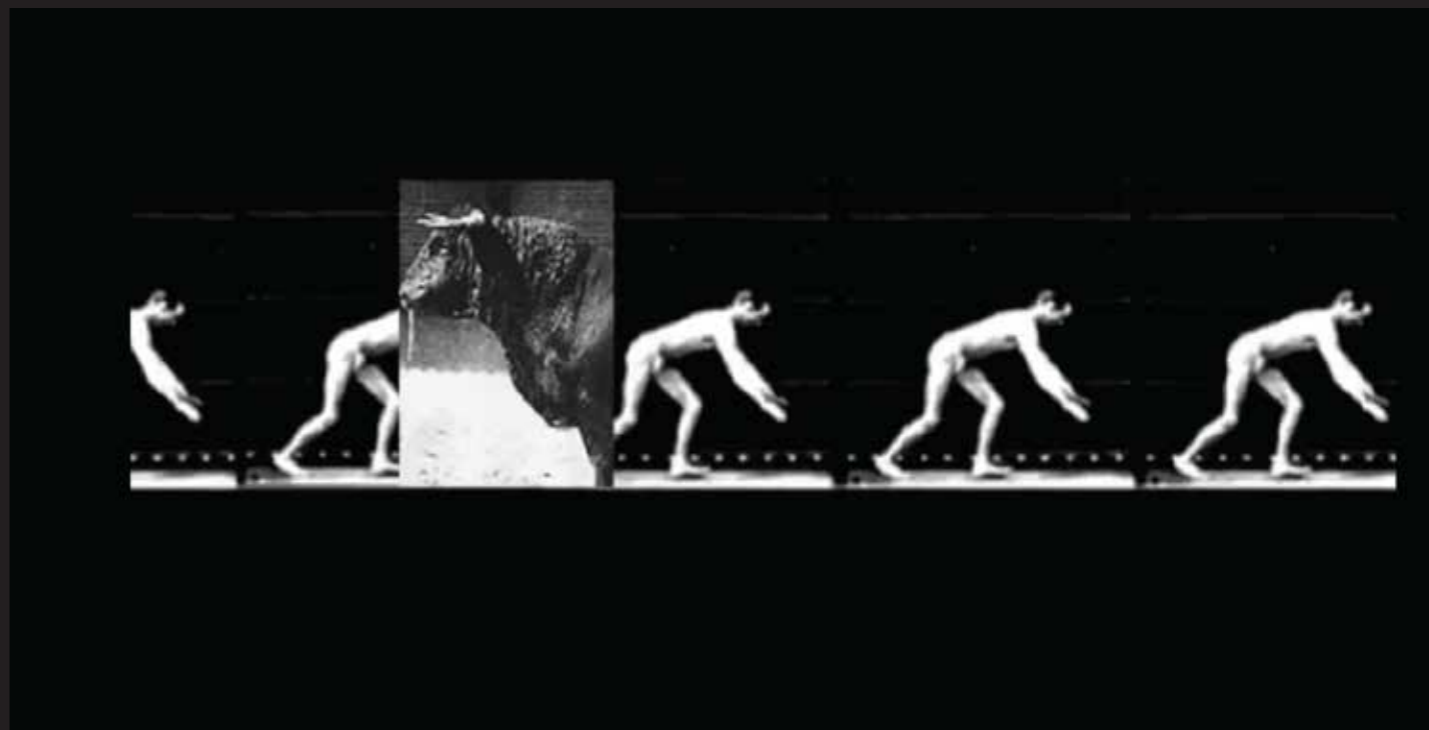
Potential draftees may self-injure in order to avoid being drafted for health reasons. The most common reason enlisted soldiers self-wound is to render themselves unable to continue serving in combat, thus resulting in their removal from the combat line to a hospital. Thus, self-injury can be used to avoid a more serious combat injury or a combat death.

In prison camps, such as gulags and concentration camps, people sometimes self-injure so that they will not be forced to work and could spend some time in the more comfortable conditions of the infirmary barracks.



Scrap

Video
2004



31 mc
Digital Work
2009



At
Photograph
2011



Replica of the famous painting Composition
in RYB of Mondrian.

Soap Replica

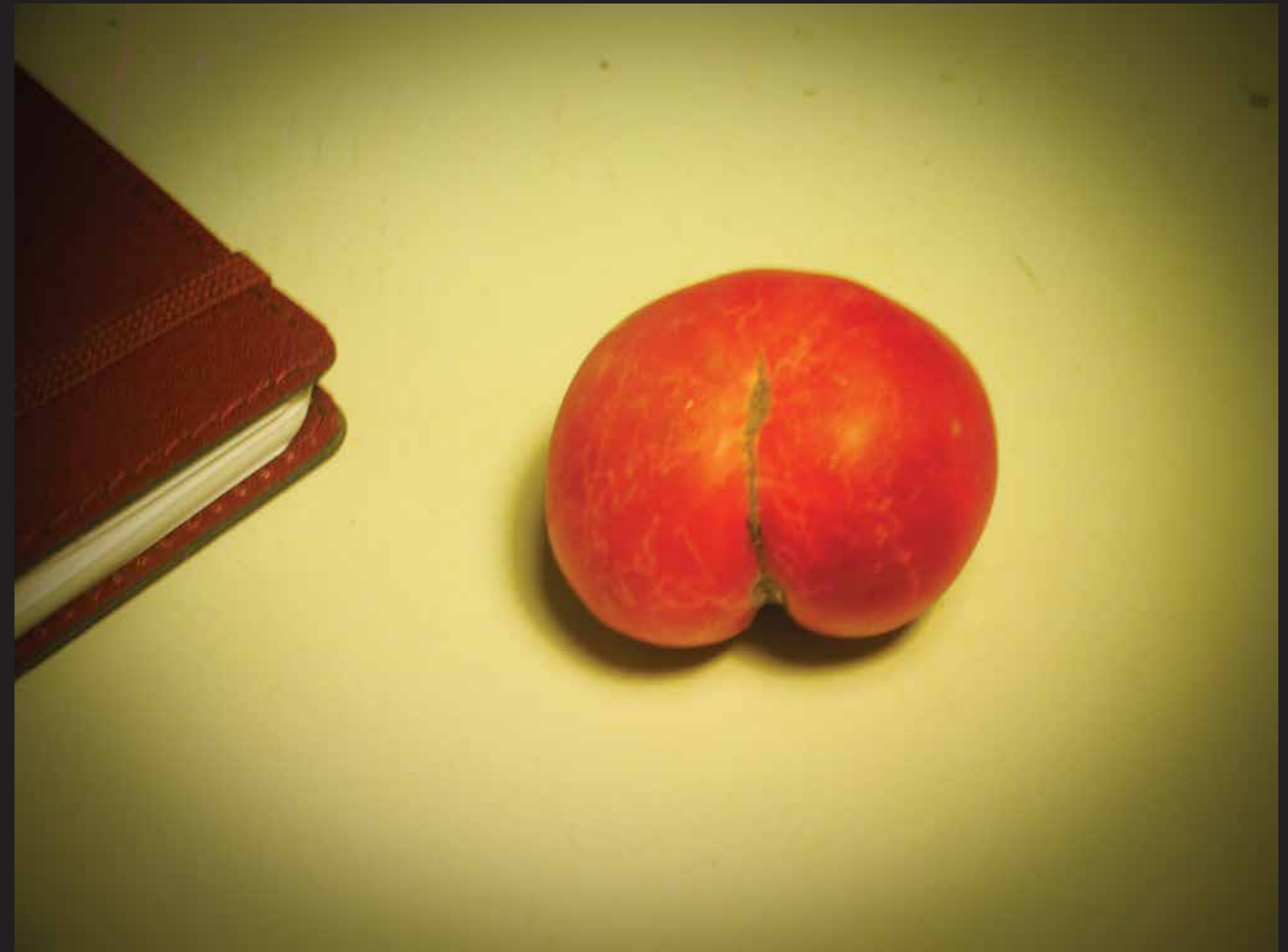
Digital Print
2004

```
wed = 0;
function crSq(xSq,ySq,widSq,heiSq,color)
{
    wed ++;
    //trace(wed);
    this.createEmptyMovieClip("naSq"+wed,wed);
    temper = eval("naSq"+wed);
    //trace(temper);
    temper.beginFill(color);
    temper.moveTo(xSq, ySq);
    temper.lineTo((widSq+xSq), ySq);
    temper.lineTo((widSq+xSq), (heiSq+ySq));
    temper.lineTo(xSq, (heiSq+ySq));
    temper.lineTo(xSq, ySq);
    temper.endFill();
}
crSq(0,0,86,151,0xE5BC02);
crSq(100,603,189,26,0x336699);
crSq(442,470,124,124,0xBB2002);
crSq(704,598,30,23,0xBB2002);
crSq(86,0,18,692,0x000000);
crSq(177,0,16,692,0x000000);
crSq(235,0,16,692,0x000000);
crSq(272,0,17,692,0x000000);
crSq(426,0,17,692,0x000000);
crSq(565,0,17,692,0x000000);
crSq(610,0,16,692,0x000000);
crSq(691,0,15,692,0x000000);
crSq(0,151,727,19,0x000000);
crSq(0,252,727,19,0x000000);
crSq(0,338,727,19,0x000000);
crSq(0,452,727,19,0x000000);
crSq(440,582,170,19,0x000000);
crSq(440,662,170,19,0x000000);
```

Grow tomato grow...

Tomato

Photograph
2009



Several Performances including:

Performance on Social Constraints
Istanbul Bilgi University / İstanbul / Türkiye

Street Music in Istanbul / Türkiye

Hush!
Street Performance with 60 litres of Saliva
at Taksim Square / İstanbul / Türkiye

Street Painting in Pretoria / South Africa
Street Music in Cape Town / South Africa

Lost Works

ABİ
Painting - mixed on canvas

Performances Lost Works

1999 - 2011

